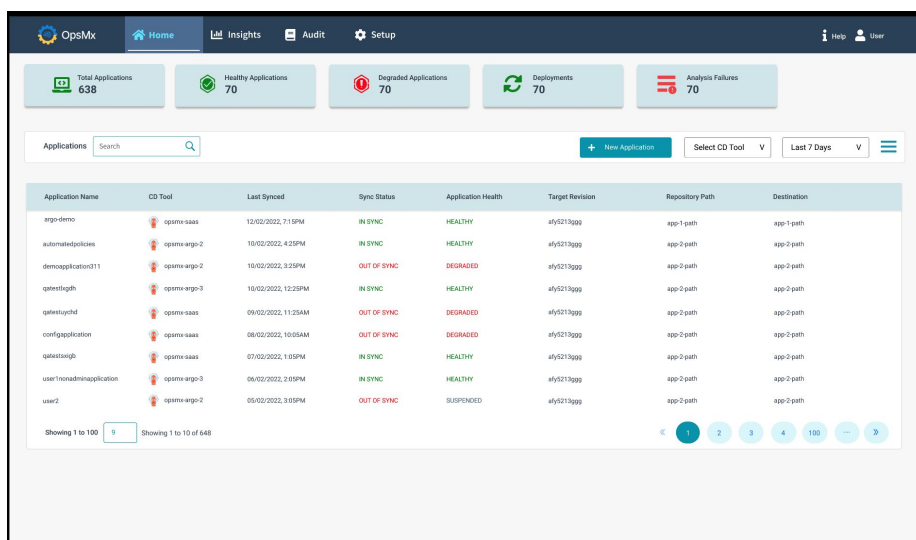




# VISIBILITY and AUDIT for ARGO

Keep track of your deployments across all clusters in your enterprise

The OpsMx Visibility and Audit for Argo module provides enterprise-wide visibility and control of your deployments, applications, Argo instances, and workflows through a single pane of glass. End-to-end workflow and system audit capabilities offer you a real-time and historical view of your software changes, deployments, environments, and releases.



Application Name	CD Tool	Last Synced	Sync Status	Application Health	Target Revision	Repository Path	Destination
argo-emo	opsmx-saas	12/02/2022, 7:15PM	IN SYNC	HEALTHY	aly5213pqq	app-1-path	app-1-path
automatedpolicies	opsmx-argo-2	10/02/2022, 4:28PM	IN SYNC	HEALTHY	aly5213pqq	app-2-path	app-2-path
demoapplication11	opsmx-argo-2	10/02/2022, 3:38PM	OUT OF SYNC	DEGRADED	aly5213pqq	app-2-path	app-2-path
qwesthgh	opsmx-argo-3	10/02/2022, 12:28PM	IN SYNC	HEALTHY	aly5213pqq	app-2-path	app-2-path
qwesthghcd	opsmx-saas	09/02/2022, 11:25AM	OUT OF SYNC	DEGRADED	aly5213pqq	app-2-path	app-2-path
configapplication	opsmx-saas	08/02/2022, 10:05AM	OUT OF SYNC	DEGRADED	aly5213pqq	app-2-path	app-2-path
qwestosub	opsmx-saas	07/02/2022, 1:18PM	IN SYNC	HEALTHY	aly5213pqq	app-2-path	app-2-path
user1nonadminapplication	opsmx-argo-3	06/02/2022, 2:18PM	IN SYNC	HEALTHY	aly5213pqq	app-2-path	app-2-path
user2	opsmx-argo-2	05/02/2022, 3:08PM	OUT OF SYNC	SUSPENDED	aly5213pqq	app-2-path	app-2-path

Argo Application Dashboard

## Reduce Toil and Deployment Risk

Achieving visibility and control for cluster-wide deployments across the enterprise can be a significant challenge. Having to login into clusters where Argo instances are running and manually gather the health status, collect audit information and take appropriate action is a highly labor-intensive task, increases toil, and does not scale.

Furthermore, the lack of a holistic view of applications, workflows, and deployments across clusters introduces a high-risk and fragile environment.

## Gain Necessary Insights to Get Your Work Done

To make better-informed decisions, reduce deployment risk, and save hours of needless toil, you must keep track of your applications and their deployments, whatever the frequency and scale, across all Argo clusters in your enterprise.

The Visibility and Audit for Argo module analyzes all CI/CD toolchain data from each workflow in real-time to continuously assess risk and provide complete visibility, traceability, and audit for each release

## KEY BENEFITS:

### Faster and smarter decisions

Get real-time insights on application and deployment status, pending approvals, and an overview of software delivery performance with DORA metrics.

### Reduce toil and decrease MTTR

Reduce time to identify errors in build, deploy, test, and production phases from hours to seconds with the built-in diagnostic features.

### Improve operational efficiency

Quickly identify constraints in your deployment workflows and pipelines.

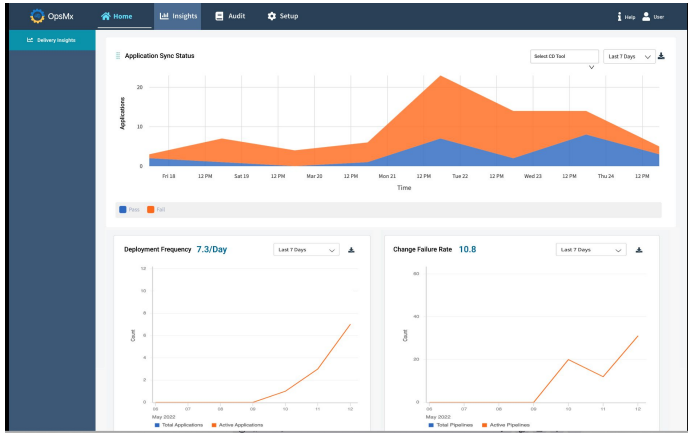
### Increase security and compliance

Audit reports can be quickly created for a chosen period highlighting who, what, and when about pipeline execution and policy violations. You can list, search, and filter on deployment, environment, and event data collected from Argo deployments.

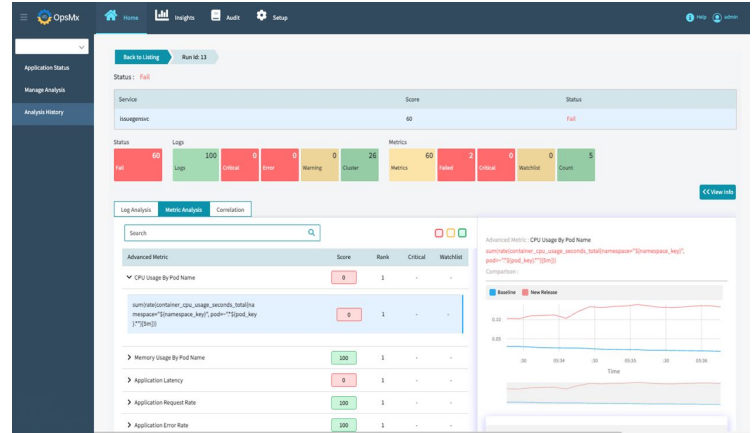
**Improves business continuity**  
continuously monitoring production systems from a single pane of glass

### Provides seamless integrations

It easily integrates with all your monitoring and logging tools.



Dora Metrics Dashboard View



Argo Rollout Analysis View

## Unified Dashboard for Visibility and Audit

Enterprise-wide visibility and control through a single pane of glass. Understand in real-time how new releases are performing against older versions. Pinpoint root causes and take action on deployment problems in real-time. Decrease MTTR with application release issues to avoid impacting your customer experience.

### DORA Metrics

Ensure that new releases are delivering the performance that users expect. See in real-time how new releases are performing against older versions. OpsMx automatically generates a complete set of deployment metrics, including DORA metrics, across all applications deployed by Argo.

### Seamless Toolchain Integration

Out-of-the-box integrations for log analyzers and APM tools you have already invested in. Seamless integration with monitoring tools, fetch data, analyze data, and prescribe results about build, deploy, test, and prod verification.

### Workflow and System Audit

Provides search and audit reports for a chosen period highlighting who, what, and when about pipeline execution and policy violations. Allow auditors to list, search, and filter on deployment, environment, and event data collected from Argo deployments in a single pane.

### Enterprise Access and Security

A fully customizable dashboard with RBAC across the enterprise ensures the right teams have visibility and access to the right applications, clusters, and workflows.

OpsMx provides a range of services, including CI/CD strategy, Argo onboarding, support, and training. OpsMx's proven onboarding process achieves Continuous Delivery in just 30 days. Talk to us now by sending an email to [info@opsmx.io](mailto:info@opsmx.io) or complete the Contact Us form on our website.

## ABOUT US

OpsMx is a leading provider of Argo for enterprise usage. OpsMx offers 24x7 support for Open source Argo and Enterprise extensions for security, application on-boarding, and continuous verification. OpsMx has offices in the United States, Europe, and India.

### FOR MORE INFORMATION, CONTACT US:

OPSMX, INC | 350 OAKMEAD PKWY, SUNNYVALE, CA 94085 | [INFO@OPSMX.COM](mailto:INFO@OPSMX.COM) | [WWW.OPSMX.COM](http://WWW.OPSMX.COM)